



**SEMI-AUTOMATIC
SHOTGUN
USER MANUAL**

THESE SAFETY RULES ARE OBLIGATION FOR ALL FIREARMS MADE BY ARMELEGANT. SOME OF THE OPERATIONS MENTIONED BELOW ARE NOT FOR ALL PRODUCTS. FOR INSTANCE CHECKING THE RECEIVER FOR SHELL IS NOT CONTROL FOR OVER&UNDER SHOTGUNS. IT IS FOR SEMI AUTOMATIC SHOTGUNS.

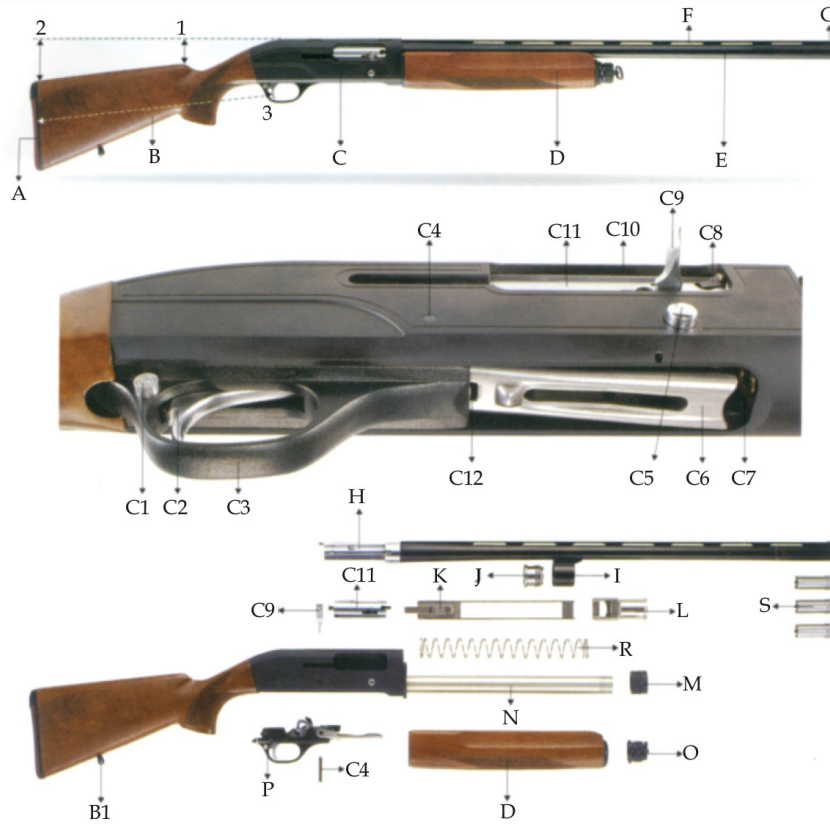
- 1. RULE: ALWAYS KEEP THE MUZZLE POINTED IN A SAFE DIRECTION. NEVER POINT A FIREARM AT SOMETHING THAT IS NOT SAFE TO SHOOT!**
- 2. RULE: FIREARMS SHOULD BE UNLOADED WHEN NOT ACTUALLY IN USE.**
- 3. RULE: DON'T RELY ON YOUR GUN'S SAFETY. SAFETY DEVICES ARE NOT A SUBSTITUTE FOR SAFE HANDLING PROCEDURES.**
- 4. RULE: BE SURE OF YOUR TARGET AND WHAT'S BEYOND IT. NEVER SHOOT AT WATER OR AT A HARD SURFACE.**
- 5. RULE: USE PROPER AMMUNITION. ONLY USE FACTORY-LOADED, NEW AMMUNITION MANUFACTURED TO INDUSTRY SPECIFICATIONS: CIP (EUROPE AND ELSEWHERE), SAAMI (USA). BE CERTAIN THAT EACH ROUND YOU USE IS IN THE PROPER CALIBER OR GAUGE AND TYPE FOR THE PARTICULAR FIREARM. RELOADING REQUIRES EXTRA DILIGENCE.**
- 6. RULE: LEAD WARNING**
- 7. RULE: IF YOUR GUN FAILS TO FIRE WHEN THE TRIGGER IS PULLED, HANDLE WITH CARE!**
- 8. RULE: ALWAYS WEAR EYE AND EAR PROTECTION WHEN SHOOTING.**
- 9. RULE: BE SURE THE BARRELS CLEAR OF OBSTRUCTIONS BEFORE SHOOTING.**
- 10. RULE: DON'T ALTER OR MODIFY YOUR GUN AND HAVE IT SERVICED REGULARLY.**

OPERATING SYSTEM

The ARMELEGANT shotgun is a gas operated, auto loading shotgun. It is capable of shooting up to five shots (with the magazine plug removed using 1 3/4" loads) in rapid succession with each pull of the trigger. Upon firing, high pressure gas from behind the shot charge passes through two ports in the barrel, through the gas bracket and into the gas cylinder. High pressure gases force the gas piston rearward, applying pressure to the piston rod. As the piston rod moves rearward, it pushes the bolt assembly rearward, operating the action.

As the bolt assembly moves rearward, it recocks the hammer and ejects the fired shell. After full rearward travel, the bolt assembly returns forward, picking up a new shell from the magazine and chambering it automatically. After the last shell has been fired, the bolt assembly locks to the rear, instead of returning forward. This facilitates speedy reloading.

NOMENCLATURE



A Buttplate	C11 Bolt	P Trigger Assembly
B Stock	C12 Carrier Stop Push Button	R Sleeve Spring
B1 Stock Swivel	D Fore-end	S Choke Tube
C Receiver	E Barrel	1 Drop at Comb (40 mm-1.57")
C1 Safety Button	F Rib	2 Drop at Heel (62 mm-2.44")
C2 Trigger	G Front Sight (Front Bead)	3 Stock Length (360 mm -14.20")
C3 Trigger Guard	H Barrel Tang	
C4 Trigger Plate Retaining Pin	I Gas Cylinder	
C5 Bolt Release Button	J Gas Piston	
C6 Carrier	K Operating Rod	
C7 Loading Gate	L Sleeve	
C8 Extractor	M Recoil Absorber	
C9 Cocking Handle	N Magazine Tube	
C10 Ejection Port	O Fore-end Cap	

WARNING: Do not attempt to make repairs to any firearm without proper knowledge or training. Do not alter parts or use substitute parts not made by WINMARK. Any alterations or adjustments that may be necessary to the operating mechanism should be performed by the Manufacturer or by its Local Official Distributor.

TECHNICAL FEATURES AND DATA

The WINMARK semi-automatic shotgun, 12 gauge, comes with the following features:

GAS OPERATION SYSTEM

The unique gas operation system, with gas cylinder and self-cleaning piston automatically expels the excess gas of the most powerful cartridges: The result is that the shotgun, without any adjustment, fires everything from the light 24 gr. (7/8 oz.) loads to the powerful 57 gr. (2 oz.) 3" Magnum 12 ga. shot shells.

RECOIL ABSORBER

The elastic recoil absorber reduces stress from the impact of the breech bolt on the receiver and absorbs part of the vibrations normally transmitted to the shooter.

TECHNICAL FEATURES

GAUGE	12
BARREL CHAMBER	2 3/4" (70 mm) ve 3" (76mm)
OPERATION	Semi-Automatic, Gas Operation
RECEIVER	7075 t6 light alloy
BARREL	42CrMo4 (4140 steel, chrome-plated bore and chamber
RIB	Ventilated
SAFETY	Gross bolt
MAGAZINE	2+1 or 4+1 or 7+1
STOCK, FORE-END	Selected walnut, hand checkered or High Strength Fiber-Glass Reinforced Technopolymer.
WEIGHT (APPROX.)	3 kg / 6.61 lb

(*) Weights are approximate, dependent on wood density and barrel length.



In the "off safe" position, a red warning band is visible on the safety button on the left side of the trigger guard. The gun can fire.
(Photo 1)



To place the gun "ON SAFE," press the safety button to the right. The red warning band is NOT visible on the safety button. The gun cannot fire. (Photo 2)

ASSEMBLY OPERATIONS (END USER ONLY)

To place the gun "ON SAFE," press the safety button to the right. The red warning band is NOT visible on the safety button. The gun cannot fire. (Photo 2)

WARNING: WINMARK assumes no responsibility for any injury or property damage resulting from improper or careless handling, intentional or accidental discharge of the firearm.

The WINMARK semi-automatic shotgun is packed from the factory with the barrel separate from the stock/receiver/fore-end assembly. Assemble the barrel to the stock/receiver/fore-end assembly as follows:

WARNING: All assembly, disassembly and maintenance procedures should be carried out with the firearm unloaded (magazine tube empty, receiver empty and cartridge chamber empty). Check that the firearm is unloaded by looking through the ejection port (C10), the loading gate (C 7) and the chamber.

CAUTION: If, for any reason, the breech bolt is open and the fore-end is separated from stock / receiver assembly, avoid pressing the breech bolt release button and be careful to keep your fingers away from the ejection port. Should the breech bolt release button (C5) be pressed in this condition, the breech bolt would slam forward and would stop only when the cocking handle (C9) hits the forward rim of the ejection port. This could damage both the handle and receiver.

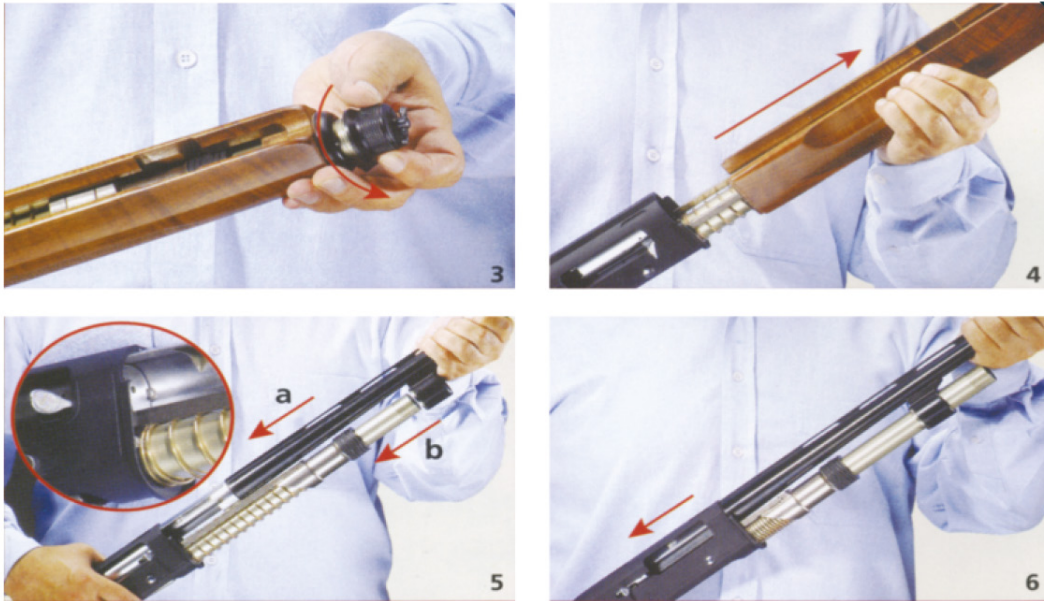
CAUTION: You cannot fit the barrel inside the barrel if the bolt is fully open. To close the bolt, press the breech bolt release button by handling tightly the cocking handle so avoid the hit of the cocking handle to the forward rim of the ejection port. This will prevent the damage to both the handle and receiver.

1. Check the barrel. The bore and chamber must be clean and free from obstructions.

2. Unscrew (counterclockwise) the fore-end cap from the stock / receiver / fore-end assembly. (Photo 3)

3. Pull the fore-end off the magazine tube. (Photo 4)

WARNING: The gun is packed with the piston inserted into the gas cylinder of the barrel.



4. Partially slide the barrel tang into the receiver, taking care that the piston does not drop out of the gas cylinder. You should force the barrel. When you force the barrel tang into the receiver (when the bolt fits to its slot on the barrel tang) pull with your other hand the cocking handle to ease the fitting of the barrel into the receiver. Whenever you are convinced that the barrel is assembled totally into the receiver you can release the cocking handle. **(Photo 5, 6, 7)**

A. Be sure about that the barrel tang screw is inside its slot on the bolt **(Photo 5a)**

B. Do this step by taking care that the magazine tube cap shaft enters the piston hole as well as that of the gas cylinder **(Photo 5b)**

Retract the bolt by means of the cocking handle hooks into the OPEN position. **(Photo 6)**

C. By handling the cocking handle **(Photo 7a)**

D. Push the bolt release button. **(Photo 7b)**

WARNING: During the assembly of the barrel to the receiver take care that the piston does not drop out of the gas cylinder and the magazine tube cap shaft enters the piston hole as well as that of the gas cylinder.

5. Slide the fore-end into place over the gas cylinder and magazine tube. Check that the fore-end is perfectly centered on the receiver face. The foreend is correctly assembled when there is no space left between the parts. **(Photo 8)**

6. Screw (clockwise) the fore-end cap to the gun. **(Photo 9)**

7. The gun is cocked. Keeping the bolt retracted approximately 2 cm (1 inch), depress the trigger to lower the hammer.



WARNING: TAKE SPECIAL CARE IF THERE ARE CHILDREN AROUND. IT IS YOUR RESPONSIBILITY TO INSURE THAT CHILDREN UNDER THE AGE OF 18 OR OTHER UNAUTHORIZED PERSONS DO NOT GAIN ACCESS TO YOUR FIREARM.

To reduce the risk of accidents involving children, unload your firearm, lock it and store the ammunition in a separate locked location. Please note that devices intended to prevent accidents -for example, cable locks, chamber plugs, etc, - may not prevent use or misuse of your firearm by a determined person. Steel gun safes may be more appropriate to reduce the likelihood of intentional misuse of a firearm by an unauthorized child or person.

AMMUNITION

WARNING: WINMARK assumes no responsibility for physical injury or property damage resulting from the use of defective, improper, hand-loaded, reloaded or remanufactured ammunition. Serious damage and injury, and even death, could result from the use of incorrect ammunition, from firing against bore obstructions and from propellant overloads.

WINMARK semi-automatic shotguns feature 3" (76 mm) chambers. You will find the markings for the gauge and chamber length for your shotgun on the side of the barrel. Every gun has been tested with special proof test ammunition.

WARNING: Never use cartridges that do not correspond to the markings on the side of the barrel.

WARNING: Use only cartridges with a length equal (76mm-3") to or less (7mm-2 Vt") than the chamber length indicated on the side of the barrel.

WARNING: To avoid use of improper ammunition, check markings on the cartridge box and on the cartridge itself to ensure that the correct gauge and length of shell is used for your firearm.

WARNING: WINMARK does not recommend any of our shotguns for use with reloads, steel shot or otherwise.

LOADING AND FIRING

WARNING: Read and familiarize yourself with the loading and unloading procedure for this shotgun by reading this manual prior to using the shotgun. Do not use a loaded firearm until you can perform these procedures correctly. Before loading the gun, make sure that the safety is on. To place the gun "ON SAFE," press the safety button to the right. The red warning band is NOT visible on the safety button. The gun cannot fire. (Photo 2) A safety which is not fully engaged will not prevent weapon discharge. A safety which is not fully engaged will not prevent weapon discharge. Always point the firearm in a safe direction!

WARNING: Always check the barrel prior to loading to ensure that it is clean and free from obstructions.

WARNING: The shooter and bystanders must always wear eye and hearing protection. Particles of shot, lead, powder, lubricant, etc. may cause injury to persons. Hearing protection reduces the risk of hearing damage caused by exposure to shooting noise.



1. Check that the carrier stop push button is completely depressed. If not, depressed it completely. **(Photo 10)**

2. By completely taking the bolt handle back, keep the bolt stuck back. **(Photo 11)**

3. Engage the safety by pushing the safety button until the red ring disappears. **(Photo 12)**

WARNING: When the safety button shows the red ring, the firearm is in the FIRE position. The manual safety is merely a mechanical device and is in no way a substitute for the Safety Rules of firearm handling.

4. Insert the first round into the cartridge chamber through the ejection port. **(Photo 12)**

5. Depress the bolt release button to lock the bolt, keeping fingers away from the ejection port.

(Photo 13)

WARNING: The firearm is now loaded and, once the safety is disengaged, ready to fire. Always keep your fingers away from the trigger and keep the trigger free from any contact when you do not intend to fire. Never point the firearm at something that is not safe to shoot.

NOTICE: The manufacturer assumes no responsibility for any injury or property damage resulting from improper or careless handling, intentional or accidental discharge of the firearm.

6. Insert through the loading gate the other rounds by placing each round on the carrier and pressing it down and forward into the magazine tube until it engages the stop tooth. **(Photo. 14)**

7. To fire, disengage the safety and pull the trigger.

WARNING: If the gun does not fire on a live cartridge when the trigger is pulled, activate the safety, wait one minute, then unload the firearm as described in the chapter "Unloading the firearm".



8. When the last round has been fired, the bolt remains open, thus signaling that the magazine is empty.

(Photo 15)

9. Engage the safety and, if required, reload the firearm as indicated (start with the 3rd step)

UNLOADING

1. Pointing the firearm in a safe direction, check that safety is engaged (red ring covered).



2. Retract the breech bolt to extract and eject the chambered live round.
(Photo 16)



3. Keep pressing down the carrier **(Photo 17)**



4. At the same time pushing against the cartridge in the magazine, depress the breech bolt release button to ease exit of the shells from the magazine tube.
(Photo 18)



5. Check to ensure the magazine tube, receiver and chamber are empty. Disengage the safety. Be careful where you point the firearm, even though it might not be loaded.

a. By pressing down the carrier check to ensure the magazine tube is empty.

b. Keeping the bolt retracted approximately 2 cm (1 inch), make a visual check of the cartridge chamber to ensure it is empty. **(Photo 19)**

6. Depress the trigger to lower the hammer.

WARNING: Always unload your firearm before placing it in a vertical position such as against a wall, fence, tree, etc. The gun may fall from a standing position with sufficient force to be discharged.

DISASSEMBLY OPERATIONS (END USER ONLY)

WARNING: Check the firearm is unloaded (cartridge chamber empty, receiver empty, magazine tube empty). Keeping the bolt retracted approximately 2 cm (1 inch), check that the chamber is unloaded by looking through the chamber.

Keeping the bolt retracted approximately 2 cm (1 inch), check that the receiver is unloaded by looking through the ejection port.

By pressing down the carrier check to ensure the magazine tube is empty.

If the shotgun is not unloaded, unload it as described in the chapter "Unloading the firearm". Lower the hammer on the unloaded gun by pulling the trigger.

BARREL



1. Unscrew (counterclockwise) the fore-end cap from the firearm. **(Photo 20)**
2. With one hand hold down the barrel and with the other hand slide the fore- end off the magazine tube. **(Photo 21)**
3. Grasping the barrel and holding the piston inside the gas cylinder with the right thumb to prevent dropping it, slide the barrel assembly forward off the stock / receiver assembly. **(Photo 22)**
4. Slide the piston off the gas cylinder. **(Photo 23)**



BOLT



1. Check that the carrier stop push button is completely depressed. If not, depress it completely. Otherwise you cannot make the hook into the OPEN position **(Photo 24)**



2. Retract the bolt by means of the cocking handle until it hooks into the OPEN position **(Photo 25)**



3. Extract the cocking handle from the bolt slide. **(Photo 26)**



4. By holding KL subassembly with your left hand and pushing bolt release button, slide the operating rod sleeve (KL subassembly) forward off the magazine tube to extract the bolt assembly from the receiver. **(Photo 27)**



5. During the removal of the KL subassembly completely take care that the bolt does not drop out of the KL subassembly. **(Photo 28)**

TRIGGER PLATE

1. Engage the safety.



2. Depress the carrier stop push-button. **(Photo 29)**



3. Push out the trigger plate retaining pin (C4) by pressing it with a drift punch or other similar object. **(Photo 30)**

4. Keeping the breech bolt release button pressed, extract the trigger plate by pulling on the trigger guard with a forward and downward movement. (Photo 31 and 32) To avoid any damage to the stock please remove the trigger plate by hammering forward as in Photo 31.

CAUTION: Further disassembly of the firearm is not recommended, unless carried out by a competent gunsmith.



MAINTENANCE (CLEANING AND OILING)

On WINMARK shotguns, maintenance has been reduced to a minimum, but that minimum must be performed to ensure safe and reliable functioning and a longer service life for the shotgun. At the end of the hunting or shooting day, perform the Maintenance as indicated.

When combustion residues, grease or dirt particles have accumulated in the action, clean and lubricate the firearm cleaning and lubrication of the shotgun after use is the best guarantee for protection of parts against corrosion deriving from combustion residues and from use of the firearm in humid or saline environments.

WARNING: Check that the firearm is unloaded (cartridge chamber empty, receiver empty, magazine tube empty). Keeping the bolt retracted approximately 2 cm (1 inch), check that the chamber is unloaded by looking through the chamber. Keeping the bolt retracted approximately 2 cm (1 inch), check that the receiver is unloaded by looking through the ejection port. By pressing down the carrier check to ensure the magazine tube is empty. If the shotgun is not unloaded, unload it as described in the chapter "Unloading the firearm". Lower the hammer on the unloaded gun by pulling the trigger.

CAUTION: Do not apply excess oil: accumulation of oil attracts dirt which can plug the barrel and interfere with the functioning and reliability of the gun.

BARREL

1. After use, thoroughly clean the barrel bore by passing a swab through it to remove combustion residues. If necessary, use a cleaning rod with bronze brush and/or a patch soaked in a bore cleaning solvent. Also include the chambers in your cleaning operation.
2. Thoroughly clean the barrel tang locking shoulder.
3. Pull a clean soft patch through the barrel bore.
4. Lightly lubricate the barrel bore by pulling through it a soft clean patch treated with gun oil.
5. Check the barrel and the cartridge chamber to ensure that they are clean and free from obstructions.

WARNING: Excess oil and grease obstructing the bore even partially are very dangerous when firing and may cause damages to the shotgun and serious injury to the shooter and bystanders. Never spray or apply oil to the shot shells.

Use lubricants properly: you are responsible for the proper care and maintenance of your firearm.

GAS CYLINDER, PISTON

CAUTION: Magnum cartridges and particularly Super Magnum (3") shotshells produce a high amount of combustion gases. The particular composition of some Super Magnum shotshells' powder can generate a strong deposit of combustion residues. The parts of the shotgun which, coming into contact with the gases, are more affected by the combustion residues are the gas cylinder (inside) (I) and the piston (J).

1. Check that the piston slides freely inside the gas cylinder.
2. Carefully clean the inner side of the gas cylinder with a bronze brush sprayed with gun oil.
3. When all combustion residues are removed, clean the inside of the gas cylinder with a soft cloth.
4. Carefully clean the piston and check that the piston can move freely in gas cylinder.

CAUTION: Do not oil these parts. (GAS CYLINDER and PISTON)

Every 1000 rounds (according to the type of ammunition used) and in any case at the end of the hunting or shooting season, before storing the shotgun, complete the Maintenance with the following extra operations.

BOLT ASSEMBLY: Thoroughly clean the parts with a small brush and gun oil. Carefully dry with a soft cloth and lightly oil the parts with gun oil.

TRIGGER PLATE: Thoroughly clean the parts with a soft cloth. Lightly oil the metal parts and the trigger plate retaining pin.

RECEIVER: Maintain as described for the bolt assembly. Lightly oil the slide rails of the bolt inside the receiver.

MAGAZINE TUBE: Clean the outside of the magazine tube with a soft cloth sprayed with gun oil. Carefully dry with a soft cloth and lightly oil.

EXTERNAL SURFACES OF THE GUN

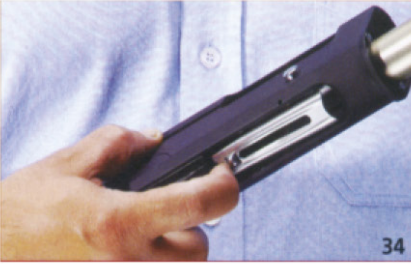
Clean with care the external surfaces of the gun to remove any trace of dirt, sweat and fingerprints. Apply a thin film of gun oil with a cotton patch.

WARNING: Use lubricants properly: you are responsible for the proper care and maintenance of your firearm. Do not apply excess oil. Accumulation of oil attracts dirt, which can interfere with the functioning and reliability of the gun.

WARNING: Once disassembled, the firearm (barrel and fore-end/receiver/stock) should be stored in the supplied case or box. Before storage, always check the conditions of the gun and its case or box. Make sure that they are perfectly dry. Moisture and water could cause damage to the shotgun.

WARNING: Do not store a shotgun in a leather scabbard. Leather attracts moisture even though it may appear to be perfectly dry. Moisture results in rust.

REASSEMBLY TRIGGER PLATE



1. Be sure about the safety engaged and the carrier stop push-button depressed. **(Photo 34)**



2. Insert the trigger plate by pushing on the trigger guard with a forward and downward movement. **(Photo 35)**



3. Please push the trigger plate by hammering towards the stock as in **(Photo 36)**



4. Insert the trigger plate retaining pins, ensuring that the trigger plate holes are centered on receiver holes **(Photo 37)**

BREECH BOLT



1. Reassemble the bolt with operating rod sleeve subassembly (KL).
2. Depress the carrier stop push-button.
3. Slide the operating rod-sleeve-bolt subassembly on the magazine tube (the bolt rests on the operating rod) and partially insert the bolt inside the receiver.
4. Holding the stock/receiver vertically, slide the operating rod-sleeve (KL) downward, compressing the recoil spring until the bolt hooks into the ÖPEN position. **(Photo 38)**
5. Insert the cocking handle into the its slot on the bolt and push it until it clicks home. **(Photo 39)**

BARREL

1. Check the barrel. The bore and cartridge chamber must be clean and free from obstructions.
2. Insert the piston into the gas cylinder. **(Photo 40)**
3. Check that the bolt is in the CLOSED position. By handling the cocking handle push the bolt release button and slowly allow the bolt to move to the CLOSED position. (Photo 41)



- CAUTION:** If, for any reason, KL subassembly is not released under your control (if you do not handle the cocking handle (C9), avoid pressing the bolt release button and be careful to keep your fingers away from the ejection port. Should the bolt release button (C5) be pressed in this condition, the bolt would slam forward and would stop only when the cocking handle (C9) hits the forward rim of the ejection port. This could damage both the handle and receiver. Move according to 3rd step.
4. Check that the carrier stop push button is completely depressed. If not, depress it completely. **(Photo 42)**
 5. Partially slide the barrel tang into the receiver, taking care that the piston does not drop out of the gas cylinder. You should force the barrel. When you force the barrel tang into the receiver (when the bolt fits to its slot on the barrel tang) pull with your other hand the cocking handle to ease the fitting of the barrel into the receiver. Whenever you are convinced that the barrel is assembled totally into the receiver you can release the cocking handle. **(Photo 5,6,7)**



a. Be sure about that the barrel tang screw is inside its slot on the bolt **(Photo 5a)**

b. Do this step by taking care that the magazine tube cap shaft enters the piston hole as well as that of the gas cylinder **(Photo 5b)**

Retract the bolt by means of the cocking handle until it hooks into the OPEN position. **(Photo 6)**

c. By handling the cocking handle **(Photo 7a)**

d. Push the bolt release button. **(Photo 7b)**

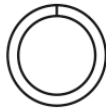



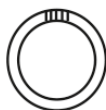
WARNING: During the assembly of the barrel to the receiver take care that the piston does not drop out of the gas cylinder AND the magazine tube cap shaft enters the piston hole as well as that of the gas cylinder.

6. Slide the fore-end into place over the gas cylinder and magazine tube. Check that the fore-end is perfectly centered on the receiver face. The forend is correctly assembled when there is no space left between the parts. **(Photo 8)**

7. Screw (clockwise) the fore-end cap to the gun. **(Photo 9)**

8. The gun is cocked. Keeping the bolt retracted approximately 2 cm (1 inch), depress the trigger to lower the hammer.

CHOKE VALUES AND AREAS USED FOR SEMI-AUTOMATIC SHOTGUNS

CHOKE VALUE	SYMBOL	NUMBER OF NOTCHES
* FULL		1
** INPROVED MODIFIED		2
*** MODIFIED		3
**** INPROVED CYLINDER		4
***** SKEET		5

Do not use choke values FULL, IMPROVED MODIFIED, and MODIFIED with slugs, single bullets or single projectiles. Do not use choke values FULL or IMPROVED MODIFIED with steel shot.



www.winmarkshotguns.com.tr
KONYA / TURKEY
+90 542 332 66 62
info@winmarkshotguns.com.tr